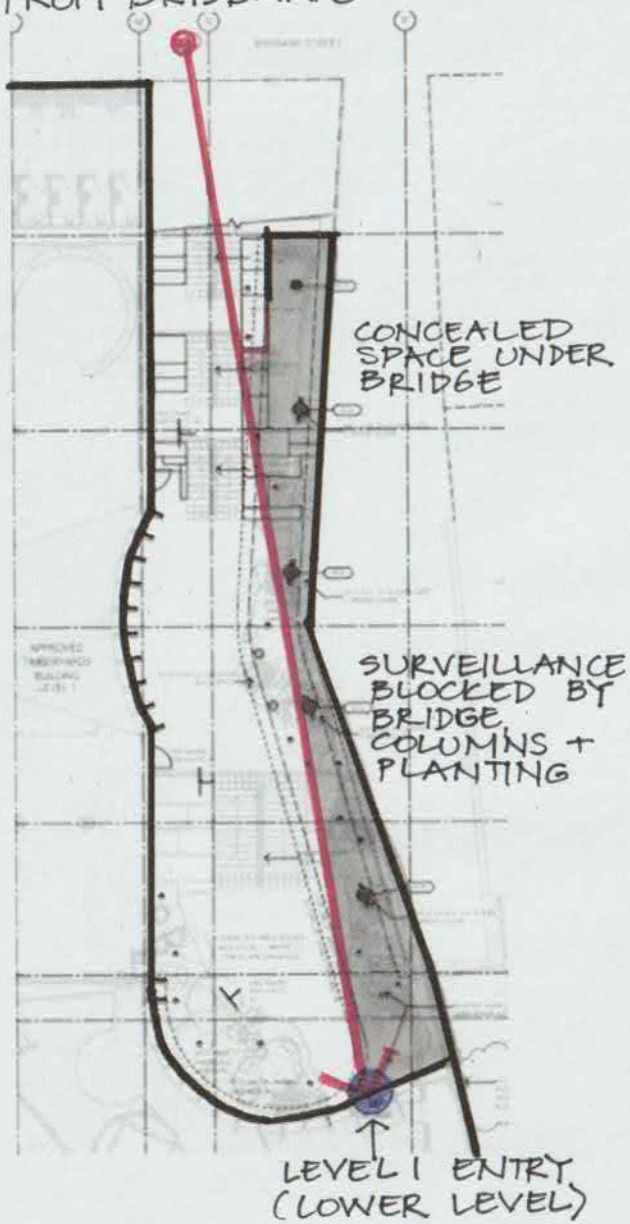
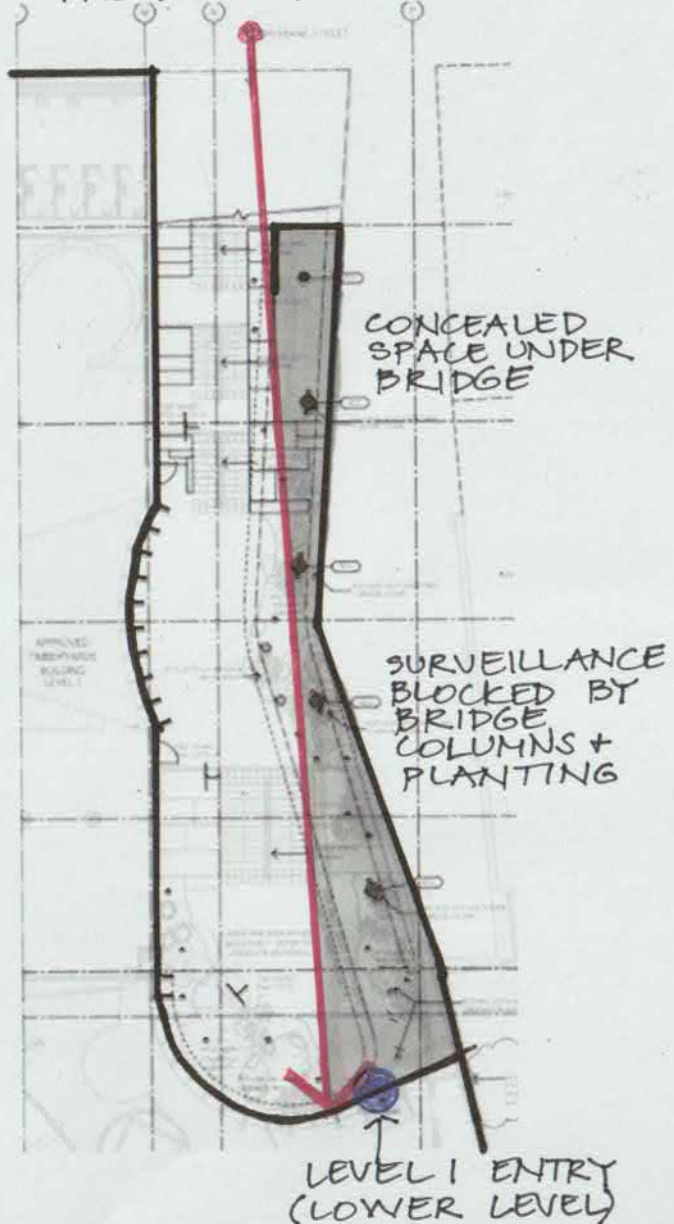


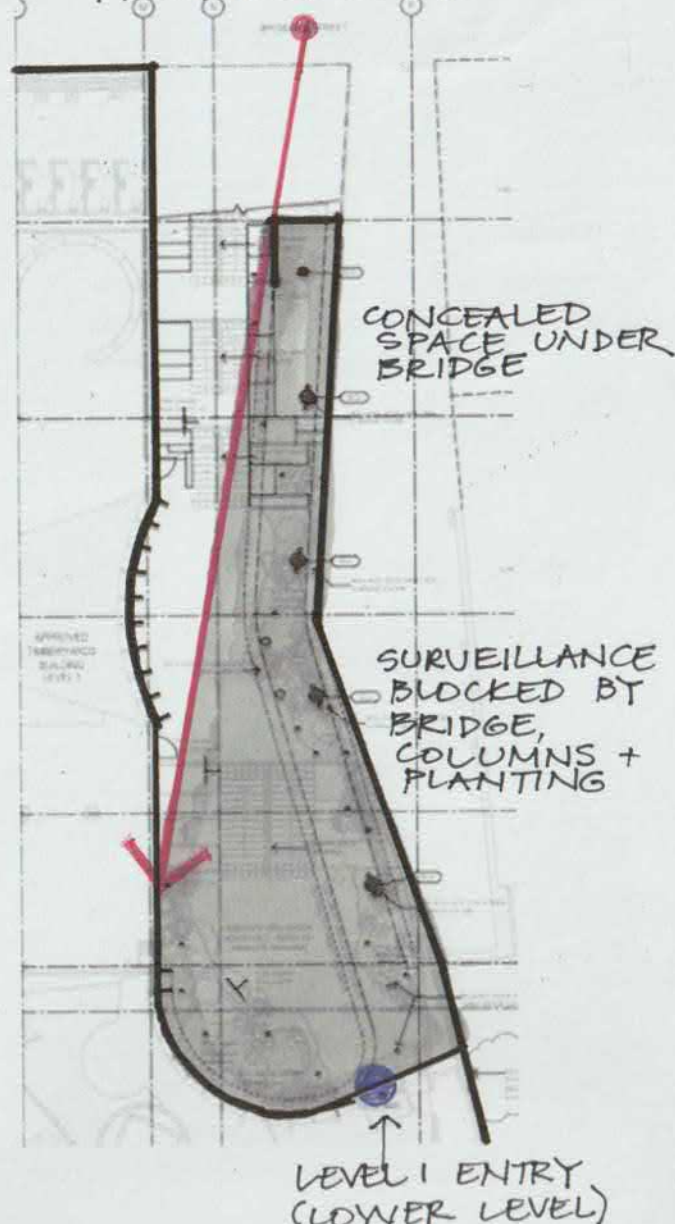
VIEW 1
FROM BRISBANE



VIEW 2
FROM BRISBANE ST



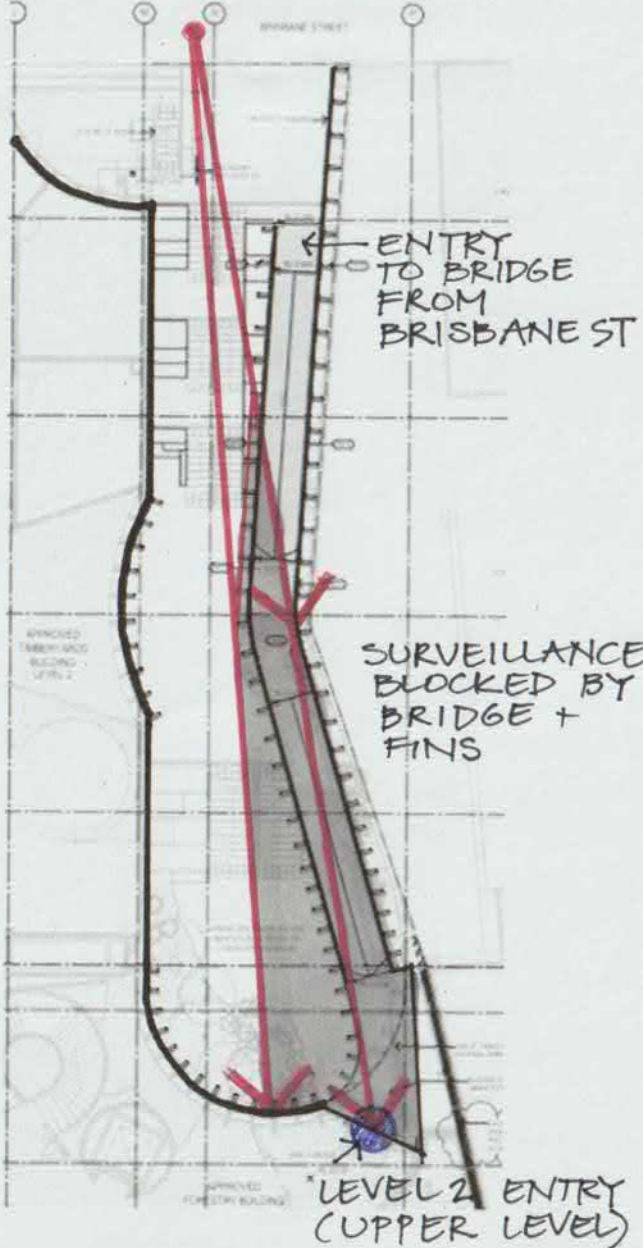
VIEW 3
FROM BRISBANE ST



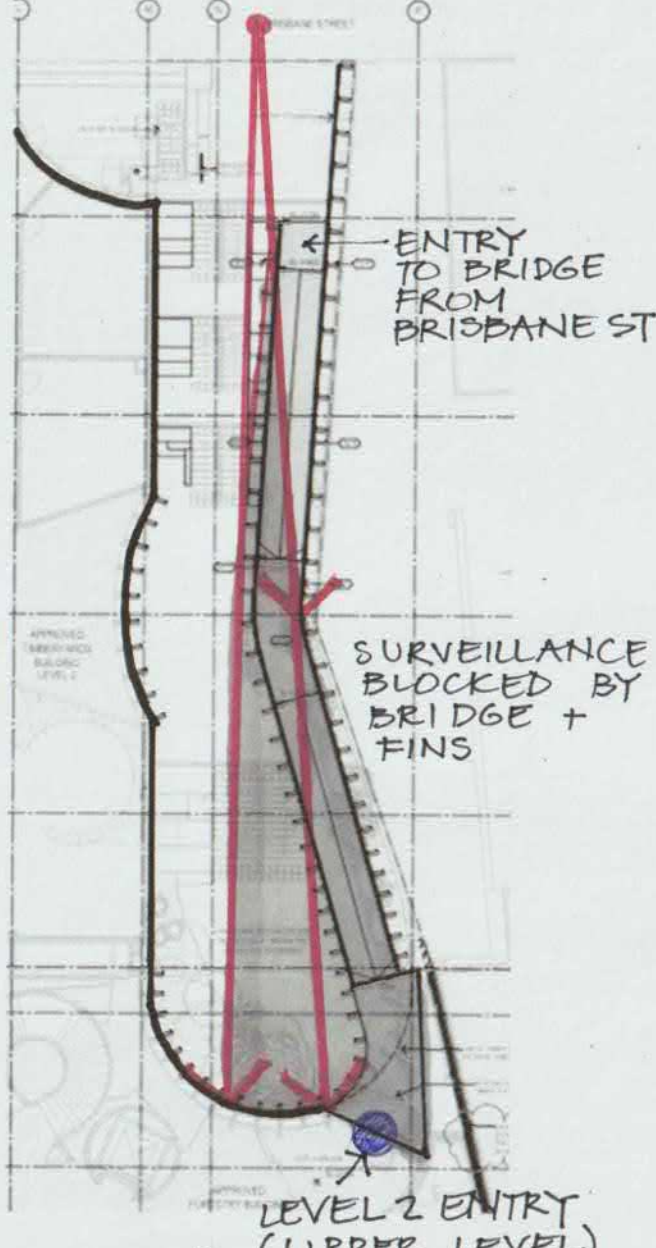
LEVEL 1 (LOWER LEVEL) - LANEWAY + BRIDGE PLAN

■ AREAS WHERE PASSIVE SURVEILLANCE FROM BRISBANE ST BLOCKED

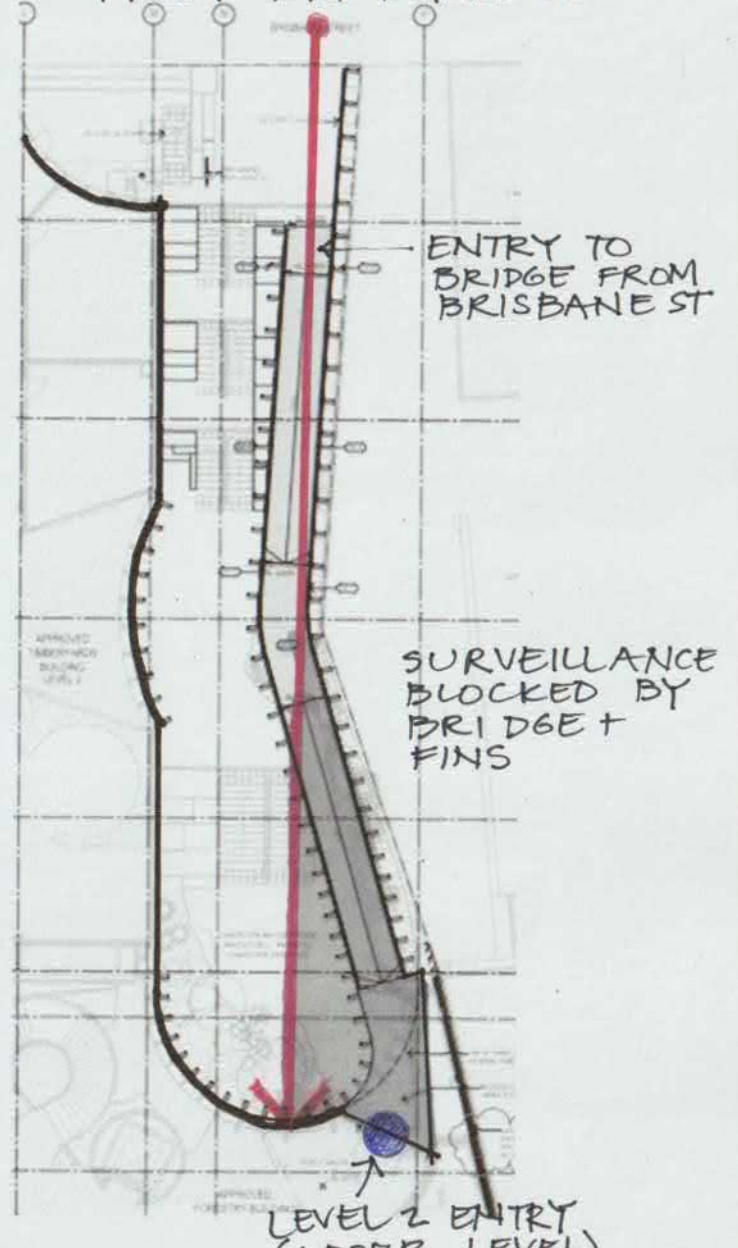
VIEW 1
FROM BRISBANE ST



VIEW 2
FROM BRISBANE ST



VIEW 3
FROM BRISBANE ST



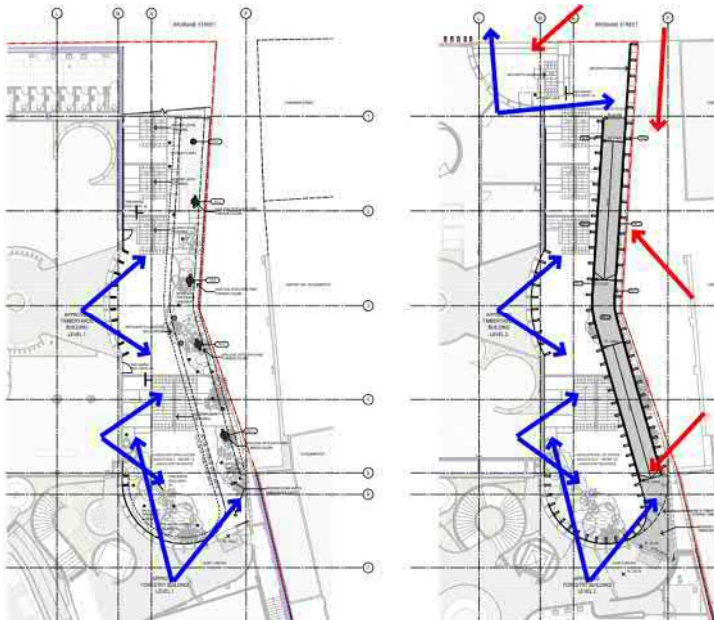
LEVEL 2 (UPPER LEVEL) - LANEWAY + BRIDGE PLAN

■ AREAS WHERE PASSIVE SURVEILLANCE FROM BRISBANE ST BLOCKED

EXTRACTS FROM ARCHITECTS' REPORT AND DRAWINGS FOR DA PLN-22-790 – MELVILLE STREET PEDESTRIAN BRIDGE

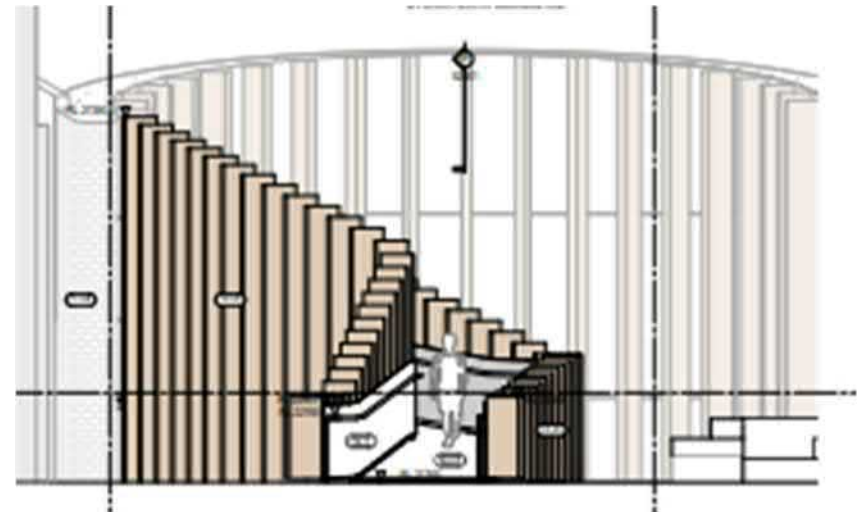


EXAMPLE OF "SELECTIVE" CHOICE OF VIEWS, NONE OF WHICH SHOW ACTUAL SIGHT LINES FROM BRISBANE STREET, OR THE PROBLEMS WITH PASSIVE SURVEILLANCE



INDICATIVE SIGHT LINES FROM THE ARCHITECTS' REPORT NONE OF WHICH LOOK DOWN THE LANEWAY AND BRIDGE FROM BRISBANE STREET. THESE APPEAR TO HAVE BEEN CHOSEN SO THAT THE PROBLEMS WITH PASSIVE SURVEILLANCE AND CONCEALED SPACES ARE NOT IDENTIFIED AND ONLY ADDRESS OVERLOOKING FROM ADJACENT BUILDINGS.

THEY DO NOT ADDRESS CLAUSES 22.4.4.A1 (a) and (d) OF THE HOBART INTERIM PLANNING SCHEME 2015.



ELEVATION FROM BRISBANE STREET FROM THE ARCHITECTS' DRAWINGS WHICH CLEARLY SHOWS THAT THERE IS A LACK OF PASSIVE SURVEILLANCE OF THE UPPER AND LOWER ENTRIES AND OF AREAS UNDER THE PEDESTRIAN BRIDGE.